



Microsoft Dynamics GP

What's New in Microsoft Dynamics GP 2016

White paper

April 2016

This document describes the enhancements added to Microsoft Dynamics GP 2016.

www.microsoft.com/dynamics/gp

Contents

What's in this document	4
Microsoft Dynamics GP 2016	5
System-wide changes	5
Web Client enhancements	5
Ability to scan multiple pages	5
Word templates for batch approval workflow	5
Workflow condition management	5
Workflow reassignment notifications	6
Configurable OData Service points added	6
OData Service deployment enhancements	6
Business Intelligence enhancements	6
Import and export SmartLists from SmartList Designer	6
Export numbers to Excel, formatted as numbers	7
Power BI reports can be added to home pages	7
Create SmartList from the Favorite using SmartList Designer	8
Financial enhancements	8
Budget import exception report	8
Scotia Bank EFT format added as a default EFT file format	8
Analytical Accounting user access settings	8
Payables batch credit card payment option	8
Edit attachments that flow to transactions	8
Deposit cash receipts batches automatically	8
Distribution enhancements	9
All-in-one document view for sales and inventory transactions	9
Prepay purchase order total	9
Project Accounting enhancements	9
Project expenses – document attachments	9
Project Accounting fields in Purchase Requisition Entry	9
Add Unit Cost field in PTE Employee Expense window	9
Project Time Entry reports added	9
Payroll enhancements	10
Inactive pay codes lookup option	10
Enhanced Payroll posting accounts setup	10
Microsoft Dynamics GP 2015 R2	11
Workflow – Payables Transaction Approval	12
Workflow – Document Attachment	12
Purchasing All-in-One view	13
Automatically Deposit Cash Receipts	14
Date effective tax rates	14
Important:	15
Enable Email on All Purchase Orders and Sales orders	15
Reporting Enhancements	15
Display Debits before Credits	15
Default SmartList Visibility	15
Workflow SmartList Designer Create View Approval	16
Sales Visual Customer over Credit limit function	16
Self Service User Type	16
Historical Received Not Invoiced Report	17
Mask Employee Social Security Number on Reports	17
Analytical Accounting Transaction Lists	18
Combine General Ledger Inquiry	18

Employee Self Service – W2	19
VAT Tax Routine	19
Time Management App	19
Service Based Architecture	20
Scriptable Provisioning & Management	20

What's in this document

This document lists enhancements that have been made to Microsoft Dynamics GP following the release of GP 2015, including enhancements for GP 2016 and GP 2015 R2. As we continue to enhance the product, we'll update this document to add descriptions of the most recent changes.

Microsoft Dynamics GP 2016

The following sections describe enhancements included in Microsoft Dynamics GP 2016.

System-wide changes

Web Client enhancements

The user interface for the Microsoft Dynamics GP Web Client has been refreshed to provide a more updated appearance. The banner in space now enables users to log in and log out, as well as indicating what company they're logged into number of enhancements to the user experience.

Support for additional browsers and mobile devices

Web Client now includes support for multiple devices, including iPad and Android tablets, as well as using multiple web browsers. The supported browsers include:

- Internet Explorer
- Microsoft Edge
- Safari
- Chrome

Open Web Client windows using search

A new search feature let you locate and open windows through search. The new search feature also works with applications that integrate with the Web Client.

Ability to scan multiple pages

When you're using the scan function that's part of the Document Attachment feature, you now can scan more than one page at a time if you're using a document feeder. Previously Document Attachment could scan only one page at a time. With GP 2016 we will have the ability to use the Document Attachment scanning functionality to scan in multiple pages (instead of one at a time). Supported scanners need to use WIA (Windows Image Acquisition) technology, along with a document feeder. The scanning process creates files in .TIF format.

Word templates for batch approval workflow

Workflow batch approvals now have a default Word template for the edit list for the following batches in the following areas:

- General Ledger
- Payables
- Receivables

The edit lists can be emailed to an approver to provide complete information about the transactions in the batches before approving the workflow step.

Workflow condition management

New options are available for automatically processing workflows when something in the workflow doesn't meet specified conditions. If a condition is not met, the workflow can continue to the next step or it can be rejected.

Prior to this change, you could specify conditions under which action is required for a step in a workflow. If the condition set for a step wasn't met, the step would not be run, nor would any subsequent steps be run. If there were no parallel steps running, then the workflow would end at the step where the condition was not met, and the step status was set to No Action Needed.

With this enhancement, two additional options will be added letting you select the action that occurs when a condition isn't met. The first is to continue to the next step in the workflow. Rather than stopping the workflow completely if a condition isn't met, the step that doesn't meet the condition won't be completed, but the workflow moves to the next

step in the sequence. This allows you to create workflows that contain steps that are completed only if specific conditions, but that don't stop the workflow if the conditions aren't met.

The second option is to reject the workflow if the condition for the step is not met. This allows the user to set up a workflow that automatically rejects documents based on specific conditions, rather than having a user manually review and reject the document.

Workflow reassignment notifications

Now you can configure a workflow to automatically notify a new approver when they need to act on a workflow that's in process. Notifications can be sent to a new approver for who was delegated to the workflow, who is part of an escalation process, or who is an alternate approver.

Configurable OData Service points added

Now you can define end-points for an OData Service, which allows Dynamics GP data to be read by any tool that supports OData feeds. The open data protocol, typically referred to as OData, defines a data model and a protocol that can let any client access information that's exposed by any data source.

OData Service deployment enhancements

OData Service is now available with Dynamics GP as a separate install. You can access the installation option under the Additional Products selection in the Dynamics GP installation program. The service is available for single-tenant implementations only.

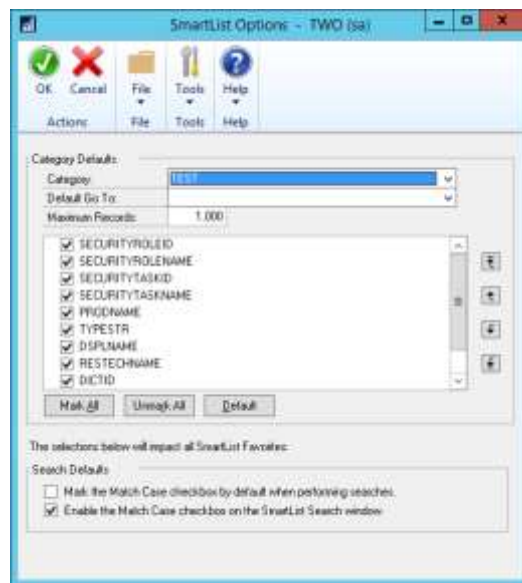
Business Intelligence enhancements

Import and export SmartLists from SmartList Designer

Now you can export and import SmartList definitions that have been created with SmartList Designer from one install to another. This is handy for partners who create SmartLists for one customer, then import them into an implementation for another customer. Customers can use the same functionality to export and import SmartLists across sites or divisions.

SmartLists created in SmartList Designer have default columns defined in the SmartList Options window

All the columns that are included in new SmartLists that are created in the SmartList Designer will be displayed in the SmartList Options window by default. From the Options window, you can include or exclude columns from the default view. You can also change order in which the columns display.



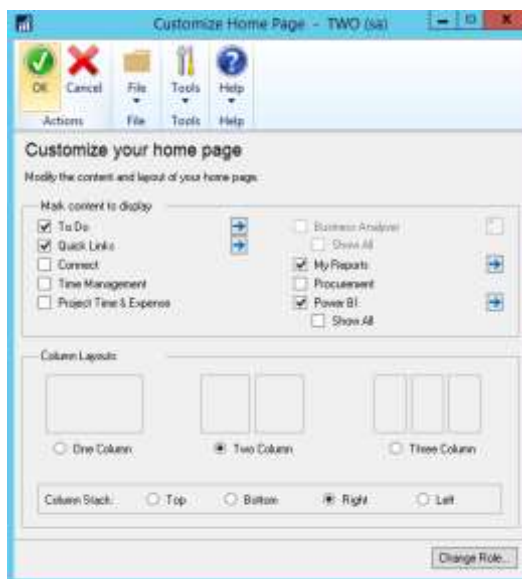
Prior to this change, new SmartLists could not have default columns defined in the SmartList Options window.

Export numbers to Excel, formatted as numbers

When a report is exported to Excel, numbers will now be formatted as numbers. Prior to this change, numbers were formatted as text in Dynamics GP reports that were exported to Excel.

Power BI reports can be added to home pages

A new web part has been added to Home Pages that allow users to easily add Power BI Reports to their workspace. To display a report, check the Power BI box, and then click the blue arrow to go into the Power BI Details window. This window will show you the available reports that you can add to your Home Page.



Once you've added reports you will have a Power BI section added to the home page. You can scroll through the available reports here. You can expand the size of the window to be larger or smaller as needed. Clicking on a report will launch the report in your browser, as long as Pop-up blocker is disabled. You can't modify the reports within the Power BI window on the GP Home Page.

Create SmartList from the Favorite using SmartList Designer

You can create a new SmartList from a favorite using SmartList Designer. And you can do so without having to remove extra columns from the default SmartList. Currently when you create a copy of a SmartList it takes the default SmartList and uses that to make the new one. With this enhancement, you can create a copy from a favorite which has different columns (usually less) than the default

Financial enhancements enhancements

Budget import exception report

When you import a budget from Excel, an exception report will list accounts that aren't set up in General Ledger, as well as any duplicates that are found in the import file. You can use Transaction Entry windows to edit the transactions to use existing accounts, or create the accounts that are listed on the exception report.

Scotia Bank EFT format added as a default EFT file format

The electronic file format used by the Canada-based Scotia Bank is now one of the default EFT formats available in Microsoft Dynamics GP. Default formats are available for use in electronic transactions for both sales and purchases.

Analytical Accounting user access settings

The process for giving users access to Analytical Accounting transaction dimension codes is now more efficient. You can use the User Access to Trx Dimension Codes window, in Analytical Accounting, to grant this access to multiple users. Prior to this change, access to transaction dimension codes was granted one user at a time.

Payables batch credit card payment option

An option has been added that enables payables computer check batches to be paid using a credit card. The payment will create an invoice for the credit card vendor and a remittance form will print that list the invoices that were paid with that credit card transaction. A new Card Name field has been added to the Payables Batch Entry window to use a credit card as the payment method for a specific batch. A credit card record must be set up in the Credit Card Setup window. You can use either bank card or a credit card, but the invoice will be created for the credit card vendor only if that vendor is assigned to the credit card.

Edit attachments that flow to transactions

You can edit information in attachments that included on transactions through the document attachment function. This feature allows you to edit the attachment properties of a document that flowed from a master record. For example, in the case where information flowed from customer to a sales Quote, you might then want to send it to the customer via email. Now you can mark the email checkbox to help automate that task.

In addition, you can manage how information flows to transactions using options that have been added as part of this enhancement. From the Document Attachment Management window, you can open the Attachment Properties window. The option allows you to define and choose whether or not information can flow into document attachments, and whether or not attachments can be sent via email.

Deposit cash receipts batches automatically

When you mark the option to automatically post cash deposits, and you post a batch that includes cash receipts from Receivables Management, a single deposit will be created that includes all the cash receipts in the batch. This batch post happens wherever you batch-post something that has cash received, such as cash receipts, receivables transactions, or sales transactions.

If you post receivables transactions at the transaction level, each cash receipt will result in a separate deposit being created and posted.

Distribution enhancements

All-in-one document view for sales and inventory transactions

A new window, Purchasing All-in-One View, was added for GP 2015 R2 that let you view all related documents for a single purchasing transaction in the same window. For GP 2016, similar functionality has been added for sales documents. You can open the Sales All-in-One View window while viewing a customer record in master record windows, such as the Customer Maintenance window, most Inquiry windows, navigation lists, as well as from the Dynamics GP home page. The most recent documents display in the window by default. To see the next set of five transactions, use the navigation buttons under each column.

The Inventory All-in-One View window displays inventory increase and decrease transactions and is accessible from the Item Maintenance window, as well as most item inquiry windows, navigation lists, and the Inventory home page.

Prepay purchase order total

Now you can pay the total amount of a purchase order with a prepayment. The prepayment includes taxes, freight, and miscellaneous charges, as well as total of all the line items. Prior to this enhancement, prepayments could not exceed the subtotal amount of the purchase order.

Project Accounting enhancements

Project expenses – document attachments

Documents such as receipts now can be attached to employee expense transactions from the PTE Employee Expense Entry window. This enhancement uses the Document Attachment functionality that lets header and line attachments, such as invoices or receipts, to be added to an employee expense. You can also see these attachments in Payables Management after the expense transaction has been posted to that module.

Project Accounting fields in Purchase Requisition Entry

Two new fields have been added to the Purchase Requisition Entry window that shows the project number and cost category for each line on a purchase requisition. The project-related information is also included on the purchase order that's created after the requisition is approved. You're not required to enter information in the new fields, so if your organization approves purchase requisitions through a workflow process, that process won't be affected by this enhancement.

Add Unit Cost field in PTE Employee Expense window

A field has been added to the Project Time and Expense window (PTE Employee Expense entry) that you can use to view and edit expense transactions. Other fields in this window are renamed to make window easier to use.

- The Item field is renamed to Cost Category ID.
- The Billing field is renamed to Bill Type
- The Amount field is renamed to Purchases

- The new fields include the Unit Cost and U of M fields.

Project Time Entry reports added

Two new Project Time Entry reports have been added for GP 2016. The PTE Timesheet Edit List is printed from the PTE Timesheet Entry window. The PTE Expense Report Edit List is printed from the PTE Expense Report Entry window.

Payroll enhancements

Inactive pay codes lookup option

There is now an option to exclude inactive pay codes from lookup windows throughout Payroll. A drop-down list in the Pay Codes window to select all pay codes to include in lookup windows, or to exclude the inactive codes. The option is available for Employee Pay Codes and Pay Codes lookup windows.

Enhanced Payroll posting accounts setup

Now you can see all posting accounts in a navigation list and filter and sort accounts using the functionality that's typically available for navigation lists. You also can export the accounts to Excel, edit them there, and then import them. On the import, an exception report will print when there are any duplicate accounts, missing accounts or when there are payroll data or other issues that cause the record import to fail.

Microsoft Dynamics GP 2015 R2

What's New is your guide to enhancements in Microsoft Dynamics GP 2015. We add enhancements based on feedback we receive from customers, as well as on market research. Your willingness to help us build better products makes this a more complete solution for small and medium-sized businesses, putting you in a better position to manage your organization successfully.

Some enhancements described in this documentation are optional and can be purchased through your Microsoft partner. If you currently have a license for one of these modules and have an active enhancement program, you automatically will receive the enhancements contained in that module.

This document describes enhancements that were added to the product since the release of Microsoft Dynamics GP 2015.

Workflow – Payables Transaction Approval

A new workflow type for Payables Transaction approval in Workflow Maintenance is now available. When you set up and mark this workflow active, the Payables Transaction Approval workflow type will allow you to submit and approve transactions in the Payables Transaction Entry window. Approval is also available through the email notification and the navigation lists. The PM Batch Approval workflow type is still available as well. If the PM Batch Approval workflow type and the Payables Transaction Approval workflow type are both Active the batch origin of Payables Trx Entry is not available for batch approval.

The Payables Transaction Entry window is the primary window for the Payables Transaction Approval workflow type. As soon as the data is entered or modified in the window, you can view the InfoBar, showing the status of the workflow. The Payables Transaction Entry window has Workflow action added to the ribbon.

The workflow process to follow is similar to the other workflow processes available in Microsoft Dynamics GP.

You can define messages that can be sent out for workflow activities that are specific to the Payables Transaction Approval workflow type using the Message Setup window.

To approve a single transaction in the Payables Transaction Entry window, add the transaction to a batch and then follow the workflow process to Submit and approve.

Workflow – Document Attachment

When a document has been added to a transaction or record using the Microsoft Dynamics GP Document Attachment feature, these attachments can now be sent with the workflow task notification email. This feature is available for PM Batch Approval, Purchase Order Approval, Purchase Requisition Approval, Vendor Approval, and Payables Transaction Approval. For example, you can now enter a payables invoice, scan it and attach the record from the vendor, and then submit the invoice for approval. When the approver receives the email, they will get the invoice information and the attachment will show the scanned invoice from the vendor.

A new checkbox is added in the Workflow Maintenance window for the specified workflow types, which when selected will allow you to send the document attachment documents for Workflow Assignment type messages.

The prerequisites to make this checkbox available are:

- The Allow Document Attachments checkbox must be marked in the Document Attachment Setup window (Administration – Setup – Company – Document Attachment Setup).
- The Send Message checkbox above it in the Workflow Maintenance window is marked.

You can now email Document Attachment documents when the messages are sent through workflow. All attachments will be sent in the order they are attached. Attachments from the header will be first, then attachments from line items.

You can view the status of the document attached in the Document Attachment Status Inquiry window (Document Attach >> Attach (Document Attachment Management) >> Line expansion next to Date). A new status called Workflow Message has been added.

Purchasing All-in-One view

A Purchasing All-in-One View window is now available for locating vendor records and displaying related purchasing documents in the same window. For example, suppose a vendor calls asking about a specific payment. You can use the Purchasing All-in-One View window to select that vendor and then view all documents related to the payment, such as the PO, receipt, invoice, credits, miscellaneous charges and finance charges, and payment to assist you in responding to your vendor's inquiries.

You can access the Purchasing All-in-One View window from the following windows and navigation lists:

- Your home page
- Vendor Maintenance
- Purchase Order Processing Document Inquiry
- Vendor Inquiry
- Payables Transaction Inquiry - Vendor
- Payables Transaction Inquiry – Document
- Purchase Order Processing Document Inquiry
- Purchase Order Processing Item Inquiry
- Navigation Lists and any views of these lists
 - Vendors
 - All Purchasing Transactions
 - Payables Transactions
 - Purchase Order Transactions

The icon for the Purchasing All-in-One View window is available only if a single record is selected in the navigation list. The data that's displayed in the Purchasing All-in-One View window depends on your selection in the navigation list. For example, if you select only a vendor record in the navigation list, the vendor ID and name information are displayed in the Purchasing All-in-One View window. If you select a transaction in the navigation list, the vendor ID, name and transaction information are displayed.



When you open the Purchasing All-in-One View window from Purchasing >> Inquiry >> All-in-One View, or Home >> Quick Links >> All-in-One View, the window opens without any data. You can specify the vendor and the details of the information to display in the window. Mark the checkbox in the upper right corner of the document to display only the related documents.

The Options button allows you to select which columns and document types to display in the window. For example, if you don't use Purchase Orders, clear the Purchase Orders selection and the first column displays receipts. The Credit Documents column marked to display by default, but with this column marked, up to six columns of data can be shown. You can view the last five transactions by document date, arranged by the newest to the oldest in each column. Use the sort order (▼ ▲) buttons to change the order for transaction information. You can view the next set of transactions by clicking Next 5.

Each section displays a summary of the transactions that you select to display in columns in the window. Click the down arrow (▼) icon to view the details, and return to the summary display by clicking the up arrow (▲) icon. The filters provided in the section's heading open a pop-up window that lets you apply additional filters, as well as search for a specific transaction. The clear filters icon will reset the filters back to the default selection.

Automatically Deposit Cash Receipts

You can now opt to have cash receipts entered in Receivables Management directly update the checkbook balance without the need to manually post the cash receipt deposit in Bank Reconciliation. To select the option, mark the "Automatically post cash receipt deposits" checkbox in the Company Setup Options window. When this option is marked, cash receipts entered in Cash Receipt Entry, Receivables Transaction Entry, Sales Transaction Entry, and Invoice Entry and on return documents in Payables Transaction Entry will be deposited automatically in the checkbook, updating the checkbook balance.

The option to automatically post cash receipts was earlier available only to those customers who had Analytical Accounting installed. This option is now available to all customers.

Date effective tax rates

The ability to enter the tax rates in advance for transactions, and calculate the taxes based on the rates specified for a date range, has been added to the main dictionary. This functionality includes the ability to recalculate taxes for saved transactions by modifying the tax rates that are used based on the latest tax rates, which are specified by tax authorities. You can mass modify the tax rates, and regenerate the taxes for the saved transaction batches.

Follow these steps to create the set up for the date effective tax.

1. Open the Company Setup Options window.
2. Microsoft Dynamics GP >> Tools >> Set up >> Company >> Company >> Options
3. In the Company Setup Options window, mark the Enable Tax Date checkbox, to allow you to use the tax date option for calculating the tax rate for the transaction based on Tax date.
4. Mark the Use Date-effective Tax checkbox. Select the option to calculate the tax. The option that you select here is used for updating the taxes for saved transactions within the tax effective date range. Transactions that are corrected will be based on the date you select here. You can select the Document date, or Posting date or the Tax date to calculate the tax.

NOTE: Select posting date if you want to calculate tax based on the posting date that you specify. Select Tax date if you want to calculate tax based on the tax date that you specify. Select Document date if you want to calculate tax based on the document date that you specify.

You must set up the date range for the specified Tax ID for GP 2015, to calculate the tax amount or percentage for the transaction. Follow these steps to create the date range for the tax ID.

1. Open the Date Effective Tax Rates window.
2. Microsoft Dynamics GP >> Tools >> Set up >> Company >> Tax Details >> Select the tax ID in the Tax Detail ID field to set up the date range for >> Date effective Tax Rates.
3. Specify the date range for the specified tax amount or percentage.

You can mass modify the tax percentage of multiple tax IDs. You can choose to modify the tax percentage or amount for the taxes detail or the tax type based on date range, or for the tax without any specifying any date range, or both.

Follow these steps to mass modify the tax percentage.

1. Open the Mass Modify Taxes window.
Microsoft Dynamics GP >> Tools >> Utilities >> Company >> Mass Modify Tax Percentage
2. Select the option to modify the tax percentage. You can choose:
 - Date effective Tax – To update the dates specified in the date range, and the percentage that you have specified in the Date effective Tax rates window.
 - Tax details – To update the tax percentage that you have specified in the Tax Detail Maintenance window.
 - Both - To update the tax percentage that you have specified in the Date effective Tax rates window, and in the Tax Detail Maintenance window.
3. Click Insert to view the list of the tax IDs listed for the modification.

NOTE: Within the specified Tax IDs, if you do not want to modify any Tax ID, you can select the Tax ID record, and click Remove.

4. Click Modify to modify the listed Tax IDs based on your specifications.

You can also regenerate taxes for the transaction batches with the updated tax percentage. You can regenerate taxes for all the saved transactions of all the modules (except GL) or the selected module, only if you mark the use date effective tax in the Company Setup Options window. You can specify the modules and the batches for which you want the taxes to be regenerated, or regenerate the taxes for all the batches in all the modules (except GL) at one time. Follow these steps to regenerate the taxes for the saved batch transactions.

1. Open the Regenerate Taxes window.
Microsoft Dynamics GP >> Tools >> Company >> Utilities >> Regenerate Taxes
2. Select the module to regenerate the updated tax for the batches. You can choose All to update the tax for the saved batch transactions in all the modules (except GL). Or, you can choose the module to update the tax for the saved batch transactions in the selected module.
3. If you choose a particular module to update the batch transactions, specify the batches in the batch range fields.
4. Click Insert to view the list of the batches that will be updated with the modified tax percentage.
NOTE: You can select a batch ID record and click Remove, to prevent updating the transactions with the modified tax percentage.
5. Click Process to recalculate the tax for the transaction in the module and batch specified.

Important:

1. The tax calculation of a transaction will be overridden if there is a date effective tax rate that exist for any tax detail.
2. If the tax calculation routine does not find the rate for a particular date range, then the percentage in the tax detail maintenance will be taken.
3. For the receiving transaction entry, only shipment/Invoice will be considered for date effective tax calculation.
4. For the returns transaction entry, only return with credit and inventory with credit type of transactions will be considered for date effective tax calculation.
5. You can regenerate taxes for transactions when workflow is active for the Receivables Management Batch Approval, Payables Management Transaction and Payables Management Batch Approval. For the transactions with the status Pending, Approved, and Rejected, you will be notified with a message for the workflow. If you continue, the workflow status of the transactions is reset.

Enable Email on All Purchase Orders and Sales orders

Additional email enhancements have been added for Microsoft Dynamics GP 2015 R2. The application now includes the ability to email all document format types (Short, Long, or Other) for all Purchase Order and Sales Order documents. A template must exist for the document you wish to email and it must be assigned to a customer or vendor, or be set as the default template for a particular company.

Reporting Enhancements

The following enhancements included in GP 2015 R2

Display Debits before Credits

In the Microsoft Dynamics GP 2015 R2, the Debit column is moved to display before the Credit column by default in account transaction reporting options in which the Credit column previously displayed before the Debit column. This applies to SmartLists and excel Reports and the associated data connection, as well as the database tables and views on which the reports are based.

Default SmartList Visibility

When creating a new SmartList Favorite, system administrators now have the option to select a default value for to whom the SmartList Favorite will be visible, including the following options: System, Company, User Class, and User ID. System is the default option selected for the visibility. By adding this option to select a default value for the Default SmartList Visibility drop-down list, system administrators can select to whom new SmartList Favorites, by default, will be visible, and make them visible by default only to the user creating the Favorite. This will help reduce clutter in other users' SmartList Favorites, and allow administrators to more easily manage and clean up the lists.

Follow these steps to define the default selection for visibility to users.

1. Open the System Preferences window.
Administration >> Setup >> System >> System Preferences.
2. In the Default SmartList Visibility drop-down, select the option to default in the Visible To drop-down list when adding a new SmartList Favorite.

Workflow SmartList Designer Create View Approval

You can now define workflow for creating views within a SQL database. Within SmartList Designer you can send a SmartList through workflow to create a SQL view based on the SmartList query. The SmartLists with the workflow status of Completed can then be used to publish refreshable Excel reports. The views which are created can also be used outside of SmartList Designer and Microsoft Dynamics GP 2015 R2 for other reporting needs. The primary purpose of the workflow type is to define the user(s) that can create the view within the SQL database. Only specific users have access to create objects within the SQL database and creating a workflow will allow those users insight into the views needed to be created. You must have setup one active workflow in order for the SQL view to go through the approval process. Set up SmartList workflows from the Administration series within the Workflow Maintenance window.

Sales Visual Customer over Credit limit function

The credit limit functionality has been enhanced in this release. Where you could require a password when entering a line item on a sales document for a customer that has exceeded their credit limit, now you can also cause a message to be displayed, alerting the salesperson that their customer has exceeded their credit limit sooner in the process of entering the sales transaction. You can also cause a visual indicator to display when a customer has exceeded their credit limit. This display helps you identify customers that have exceeded their credit limit when viewing inquiries or saved transactions.

Follow these steps to set up these options in Receivables Management:

1. Click Sales >> Setup >> Receivables.
2. In the Options section, mark the Display Over Credit Icon checkbox.
3. Mark the Warn if Customer Over Credit checkbox.

NOTE: Though you set up these options in Receivable Management, the warning is displayed in all the modules for all the transactions of the customer who exceeds the credit limit.

Self Service User Type

A Self Service user type is added in the Microsoft Dynamics GP 2015 R2 release. This user type will enable users that require very limited access to the system, the ability to perform tasks such as entering payroll time, entering project time and expenses, or creating a requisition.

Follow these steps to assign the Self-service user type to a user.

1. Click Administration >> Setup >> User.
2. Select the user ID of the user that you want to assign the self-service user type.
3. In the User Type field, select the self-service option. This option is displayed only if you have the Self Service license.

The following table describes the action that follows when you assign a user with self-service user type:

User	Self-service user type assignment possible	Message displayed
POWERUSER	No	This user has been assigned access to the "POWERUSER" security role and cannot be defined as a Self Service Type. Please review the security that has been setup for this user
Existing User	Yes	Setting this user to Self Service type will restrict the user to employee self-service tasks
New User	Yes	None

NOTE: When an existing user type is changed from self-service to Full or Limited user types, you will get a message to review the security set up for the user.

Historical Received Not Invoiced Report

The Historical Received Not Invoiced report (SRS) is a report that details the Purchase Orders and Receipts and Invoices that have been matched against the Purchase Orders. This report will be created using SQL Reporting Services Report Builder 3.0. You can specify a cutoff date based on transaction date or GL Post Date to use the report for Historical purposes. This new report will be different in the fact that it will look at each document and the date (transaction or GL Post Date) to determine if the transaction should print on the report. If the date falls within the cutoff date the user entered, the transaction will print on the report. This report will allow users to see what was received into inventory but not invoiced yet as of a specific date. This report will be a new report separate of the received not invoiced report.

Mask Employee Social Security Number on Reports

You have the ability to mask the employee's Social Security Number on specific payroll reports that you generate. Access the Report Masking window (HR & Payroll >> Setup >> Payroll >> SSN Mask) and mark the checkbox next to each report you want to apply the mask to and select OK. When the selected report is generated, the Social Security Number value will appear as XXX-XX-XXXX on the report.

Analytical Accounting Transaction Lists

The SmartLists and Excel Reports for Analytical Accounting (AA) transaction information now include more of the data that is tracked by AA. The SmartLists and Excel Reports are also modified to display each AA dimension as a column in the list, rather than having a single column for all AA dimensions. For example, the below SmartList shows how the list would display for a company tracking Cost Center and Project as AA transaction dimensions. You can summarize and work with the data in Excel using pivot table functionality.

Year	Journal Entry	GL Posting Date	Transaction Source	Account Number	Cost Center	Project	Debit Amount	Credit Amount
2014	159	3/1/2014	GLTR0000000004	000-4130-00	ADMIN	SUPPLIES	\$ 8.00	\$ 2000.00
2014	159	3/1/2014	GLTR0000000004	300-5130-00	ADMIN	HORHALE	\$ 95.00	\$ 8.00
2014	1668	4/1/2014	GLTR0000000033	100-5150-00	R&D	LAB	\$ 50.68	\$ 8.00
2014	1668	4/1/2014	GLTR0000000033	100-5170-00	IT	NETWORK	\$ 11.32	\$ 8.00
2014	1668	4/1/2014	GLTR0000000033	200-5170-00	FACILITIES	MAINTENANCE	\$ 49.26	\$ 8.00
2014	1668	4/1/2014	GLTR0000000033	000-5000-00	FACILITIES	BUILDING 2	\$ 887.30	\$ 8.00
2014	546	1/31/2014	GLTR0000000006	300-6320-00	R&D	SUPPLIES	\$ 1000.12	\$ 8.00
2014	1709	6/1/2014	GLTR0000000025	000-5100-00	ADMIN	SUPPLIES	\$ 718.12	\$ 8.00
2014	1709	6/1/2014	GLTR0000000025	200-5170-00	ADMIN	HORHALE	\$ 44.27	\$ 8.00
2014	1709	8/1/2014	GLTR0000000025	100-5170-00	MARKETING	EVENTS	\$ 10.25	\$ 8.00
2014	1709	6/1/2014	GLTR0000000025	100-5150-00	IT	SERVER	\$ 50.44	\$ 8.00
2014	833	1/31/2014	GLTR0000000006	000-4710-00	IT	DESKTOPS	\$ 606.72	\$ 8.00
2014	813	1/31/2014	GLTR0000000036	000-6730-00	R&D	LAB	\$ 1000.00	\$ 8.00
2014	233	3/1/2014	GLTR0000000004	000-4110-01	ADMIN	SUPPLIES	\$ 8.00	\$ 11255.41
2014	233	1/1/2014	GLTR0000000004	000-4310-01	MARKETING	TV	\$ 5627.02	\$ 8.00
2014	233	2/1/2014	GLTR0000000004	300-5130-00	MARKETING	TV	\$ 327.46	\$ 8.00
2014	1664	2/1/2014	GLTR0000000034	100-5130-00	ADMIN	SUPPLIES	\$ 31.22	\$ 8.00

Combine General Ledger Inquiry

In Microsoft Dynamics GP 2015 R2 in General Ledger, you can view open and historical information in the same window for Summary Inquiry, Detail Inquiry and for Account Summary. Any Go Tos or drill backs will now go to the single window instead of the user picking open or history.

Period	Debit	Credit	Net Change	Period Balance
Beginning Balance	\$0.00	\$0.00	\$0.00	\$0.00
Period 1	\$0.00	\$0.00	\$0.00	\$0.00
Period 2	\$34,582.42	\$2,994.29	(\$31,588.13)	\$32,911.87
Period 3	\$33,425.79	\$96,893.26	(\$63,467.47)	\$32,444.40
Period 4	\$181,708.22	\$12,949.09	(\$168,759.13)	\$163,685.27
Period 5	\$0.00	\$50.00	(\$50.00)	\$163,635.27
Period 6	\$0.00	\$0.00	\$0.00	\$163,635.27
Period 7	\$0.00	\$0.00	\$0.00	\$163,635.27
Period 8	\$0.00	\$0.00	\$0.00	\$163,635.27
Period 9	\$0.00	\$0.00	\$0.00	\$163,635.27
Period 10	\$0.00	\$0.00	\$0.00	\$163,635.27
Period 11	\$0.00	\$0.00	\$0.00	\$163,635.27
Period 12	\$0.00	\$0.00	\$0.00	\$163,635.27
Total	\$275,725.42	\$113,694.34	(\$162,031.08)	\$163,635.27

Employee Self Service – W2

Employees can now view and print their own W2. With Microsoft Dynamics GP 2015 R2, this functionality is now available as part of Time Management self-service.



VAT Tax Routine

A new routine called VAT Tax Routine is added in Microsoft Dynamics GP 2015 R2 which will look for any cash receipt overpayments that have been posted and applied to invoices where the discount was not taken but VAT tax was calculated on the original invoice. This routine will print the list of the customers who have not used the discount so that debit memos can be entered to adjust the payments they've made. The debit memos, however, must be created manually to adjust the unapplied amount from the cash receipt.

Select the Calculate Terms Discount Before Taxes checkbox in the Company Setup Options window to calculate the VAT tax for the payments made after the discount period. You can print the report before running the routine process, or run the routine to update the tax details and then print the report.

You can use the Process and Print Report option to run the routine, update the tax details and print the report. Using this report, you can create debit memos towards the customers to offset the payments.

Time Management App

The Time Management App is available for download from the Windows Store, Google Play Store, or Apple Store. With this app, users can enter timecards within different companies that they access to within Microsoft Dynamics GP 2015 R2. Within the navigation bar, users can see the companies that they have access to. The summary panel displays the pay codes, balances and active pay periods of the selected company.

Before you can use this app to create, view, modify, and/or submit timecards, you must configure your Microsoft Dynamics GP 2015 R2 environment to integrate with the app.

If the accrue type is Payroll, the app allows you to enter time codes against vacation or sick time paycodes.

If the accrue type is HR, the app allows you to enter time against Time Codes that are setup as Benefit Time Types. A calendar within the app allows you to see what pay periods are active and shows you which codes and dates a user has entered time off against.

Service Based Architecture

Service Based Architecture (SBA) is a functionality delivered as a service call over https that adheres to the pattern of Service Oriented Architecture. Service Oriented Architecture (SOA) is a software design and software architecture design pattern based on distinct pieces of software providing application functionality as services to other applications. In layman's terms, it is a service that exposes functionality in Dynamics GP that can be accessed using a URI (Uniform Resource Identifier). This allows a user to access the modules in Microsoft Dynamics GP.

Currently, the Timecard functionality in HR and Payroll in Microsoft Dynamics GP is also available on SBA which allows it to integrate with the Time Management App. The user who wants to use the Time Management App needs to be granted access to the SBA objects in the Security Task Setup window.

SBA's allow you to log into the ERP modules through an app, which seamlessly integrates the data flow between them. The app may be installed on any platform.

The following SBA objects are added to facilitate the Timecard Management Application integration into Microsoft Dynamics GP 2015 R2:

Objects	Module in which the object is added
ServiceGetHRAttendancelInfo	Human Resources
ServiceGetTimeCodesListAll	Human Resources
ServiceGetWorkflowListAll	System
ServiceGetWorkflowListByType	System
ServiceCreateTimeCard	Payroll
ServiceCreateTimeCardLines	Payroll
ServiceDeleteTimeCardLine	Payroll
ServiceGetActiveTimeCardList	Payroll
ServiceGetApprovedTimeCardList	Payroll
ServiceGetEmployeeDetails	Payroll
ServiceGetPayCodesListAll	Payroll
ServiceGetPayScheduleAll	Payroll
ServiceGetRestrictionCode	Payroll
ServiceGetSubmittedTimeCardList	Payroll
ServiceGetTimeCard	Payroll
ServiceRecallTimeCard	Payroll
ServiceSubmitTimeCard	Payroll
ServiceUpdateTimeCardLine	Payroll
ServiceGetHRAttendancelInfo	Human Resources
ServiceGetTimeCodesListAll	Human Resources
ServiceGetWorkflowListAll	System

Scriptable Provisioning & Management

To deliver Microsoft Dynamics GP as a cloud offering, you must be able to centralize and automate the provisioning and management of the application. A number of new cmdlets have been added to the Microsoft Dynamics GP PowerShell module, which make automated provisioning easier. The additions include cmdlets for installing the runtime and other components, creating the GP system and company databases, and adding tenants along, among others. Automating these tasks speeds up delivery and minimizes human involvement, reducing cost and the possibility of human error. View the PowerShell Users Guide for a complete list of the available cmdlets.

[Send feedback.](#)

Microsoft Dynamics is a line of integrated, adaptable business management solutions that enables you and your people to make business decisions with greater confidence. Microsoft Dynamics works like and with familiar Microsoft software, automating and streamlining financial, customer relationship, and supply chain processes in a way that helps you drive business success.

United States and Canada toll free: (888) 477-7989

Worldwide: (1) (701) 281-6500

www.microsoft.com/dynamics